

ALL - LIMA - DOWNTOWN STREETSCAPE RENOVATION CONSTRUCTION SCHEDULE

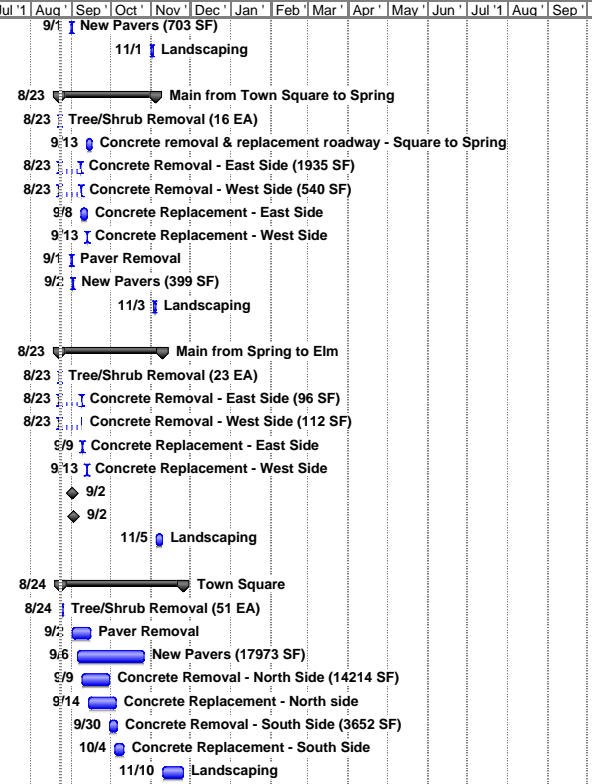
ID	Task Name	Baseline Duration	Projected Start	Actual Start	Actual Finish	Projected Finish	% Complete	Resource Names	Gantt Chart											
									Apr	May	Jun	Jul	Aug	Sep	Oct	Nov	Dec	Jan	Feb	Mar
1	E Market from Union to Town Square	62 days	Mon 6/21/10	Mon 6/21/10	NA	Tue 10/5/10	91%		6/21 → E Market from Union to Town Square											
2	Concrete Removal - North Side (4669 SF)	4 days	Mon 6/21/10	Mon 6/21/10	Tue 7/6/10	Tue 7/6/10	100%		6/21 → Concrete Removal - North Side (4669 SF)											
3	Concrete Replacement - North Side	4 days	Wed 6/23/10	Wed 6/23/10	Tue 7/6/10	Tue 7/6/10	100%		6/23 → Concrete Replacement - North Side											
4	Concrete Removal - South Side (2239 SF)	2 days	Wed 6/30/10	Wed 6/30/10	Fri 7/9/10	Fri 7/9/10	100%		6/30 → Concrete Removal - South Side (2239 SF)											
5	Tree/Shrub Removal (11 EA)	0.5 days	Mon 6/28/10	Mon 6/28/10	Mon 6/28/10	Mon 6/28/10	100%	Tawa Tree	6/28 → Tree/Shrub Removal (11 EA)											
6	Concrete Replacement - South Side	2 days	Tue 7/6/10	Tue 7/6/10	Tue 7/20/10	Tue 7/20/10	100%		7/6 → Concrete Replacement - South Side											
7	Paver Removal	2 days	Tue 6/22/10	Tue 6/22/10	Wed 6/23/10	Wed 6/23/10	100%		6/22 → Paver Removal											
8	New Pavers (3557 SF)	4.5 days	Mon 8/9/10	Mon 8/9/10	NA	Tue 8/17/10	75%	Michael's	8/9 → New Pavers (3557 SF)											
9	Landscaping	16 hrs	Mon 10/4/10	NA	NA	Tue 10/5/10	0%	Woodland	10/4 → Landscaping											
11	W Market from Town Square to Elizabeth	56 days	Tue 7/6/10	Tue 7/6/10	NA	Thu 10/7/10	86%		7/6 → W Market from Town Square to Elizabeth											
12	Tree/Shrub Removal (6 EA)	0.5 days	Tue 7/6/10	Tue 7/6/10	Tue 7/6/10	Tue 7/6/10	100%	Tawa Tree	7/6 → Tree/Shrub Removal (6 EA)											
13	Concrete Removal - North Side (85 SF)	0.5 days	Tue 7/6/10	Tue 7/6/10	Mon 7/12/10	Mon 7/12/10	100%		7/6 → Concrete Removal - North Side (85 SF)											
14	Concrete Removal - South Side (1154 SF)	1 day	Wed 7/7/10	Wed 7/7/10	Mon 7/12/10	Mon 7/12/10	100%		7/7 → Concrete Removal - South Side (1154 SF)											
15	Concrete Replacement - North Side	0.5 days	Mon 7/19/10	Mon 7/19/10	Mon 7/19/10	Mon 7/19/10	100%		7/19 → Concrete Replacement - North Side											
16	Concrete Replacement - South Side	1 day	Mon 7/12/10	Mon 7/12/10	Thu 7/22/10	Thu 7/22/10	100%		7/12 → Concrete Replacement - South Side											
17	Paver Removal	0.5 days	Tue 7/13/10	Tue 7/13/10	Tue 7/13/10	Tue 7/13/10	100%		7/13 → Paver Removal											
18	New Pavers (207)	0.5 days	Wed 8/18/10	NA	NA	Wed 8/18/10	0%	Michael's	8/18 → New Pavers (207)											
19	Landscaping	24 hrs	Tue 10/5/10	NA	NA	Thu 10/7/10	0%	Woodland	10/5 → Landscaping											
21	W Market from Elizabeth to West	55 days	Mon 7/12/10	Mon 7/12/10	NA	Fri 10/8/10	84%		7/12 → W Market from Elizabeth to West											
22	Tree/Shrub Removal (6 EA)	0.25 days	Mon 7/12/10	Mon 7/12/10	Mon 7/12/10	Mon 7/12/10	100%	Tawa Tree	7/12 → Tree/Shrub Removal (6 EA)											
23	Concrete Removal - North Side (935 SF)	1 day	Wed 7/14/10	Wed 7/14/10	Wed 7/14/10	Wed 7/14/10	100%		7/14 → Concrete Removal - North Side (935 SF)											
24	Concrete Removal - South Side (1154 SF)	1 day	Wed 7/14/10	Wed 7/14/10	Thu 7/15/10	Thu 7/15/10	100%		7/14 → Concrete Removal - South Side (1154 SF)											
25	Concrete Replacement - North Side	1 day	Mon 7/19/10	Mon 7/19/10	Tue 7/20/10	Tue 7/20/10	100%		7/19 → Concrete Replacement - North Side											
26	Concrete Replacement - South Side	1 day	Thu 7/15/10	Thu 7/15/10	Tue 7/20/10	Tue 7/20/10	100%		7/15 → Concrete Replacement - South Side											
27	Paver Removal	0.5 days	Wed 7/14/10	Wed 7/14/10	Wed 7/14/10	Wed 7/14/10	100%		7/14 → Paver Removal											
28	New Pavers (502 SF)	1 day	Wed 8/18/10	NA	NA	Thu 8/19/10	0%	Michael's	8/18 → New Pavers (502 SF)											
29	Landscaping	8 hrs	Fri 10/8/10	NA	NA	Fri 10/8/10	0%	Woodland	10/8 → Landscaping											
31	Elizabeth from Spring to Market	56.75 days	Mon 7/12/10	Mon 7/12/10	NA	Tue 10/12/10	77%		7/12 → Elizabeth from Spring to Market											
32	Tree/Shrub Removal (11 EA)	0.5 days	Mon 7/12/10	Mon 7/12/10	Mon 7/12/10	Mon 7/12/10	100%	Tawa Tree	7/12 → Tree/Shrub Removal (11 EA)											
33	Concrete Removal - East Side (2722 SF)	2 days	Wed 7/14/10	Wed 7/14/10	Tue 7/20/10	Tue 7/20/10	100%		7/14 → Concrete Removal - East Side (2722 SF)											
34	Concrete Replacement - East Side	3 days	Tue 7/20/10	Tue 7/20/10	Thu 7/22/10	Thu 7/22/10	100%		7/20 → Concrete Replacement - East Side											
35	Concrete Removal - West Side (1208 SF)	1 day	Wed 7/21/10	Wed 7/21/10	Thu 7/22/10	Thu 7/22/10	100%		7/21 → Concrete Removal - West Side (1208 SF)											
36	Concrete Replacement - West Side	1 day	Thu 7/22/10	Thu 7/22/10	Mon 7/26/10	Mon 7/26/10	100%		7/22 → Concrete Replacement - West Side											
37	Paver Removal	0.5 days	Tue 7/20/10	Tue 7/20/10	Tue 7/20/10	Tue 7/20/10	100%		7/20 → Paver Removal											
38	New Pavers (208 SF)	1 day	Thu 8/19/10	NA	NA	Mon 8/23/10	0%	Michael's	8/19 → New Pavers (208 SF)											
39	Landscaping	16 hrs	Mon 10/11/10	NA	NA	Tue 10/12/10	0%	Woodland	10/11 → Landscaping											
41	Elizabeth from Market to High	58.25 days	Thu 7/15/10	Thu 7/15/10	NA	Fri 10/15/10	69%		7/15 → Elizabeth from Market to High											
42	Tree/Shrub Removal (6 EA)	0.5 days	Thu 7/15/10	Thu 7/15/10	Thu 7/15/10	Thu 7/15/10	100%	Tawa Tree	7/15 → Tree/Shrub Removal (6 EA)											
43	Concrete Removal - East Side (346 SF)	0.5 days	Thu 7/22/10	Thu 7/22/10	Wed 7/28/10	Wed 7/28/10	100%		7/22 → Concrete Removal - East Side (346 SF)											
44	Concrete Removal - West Side (1471 SF)	1 day	Tue 7/20/10	Tue 7/20/10	Thu 7/29/10	Thu 7/29/10	100%		7/20 → Concrete Removal - West Side (1471 SF)											
45	Concrete Replacement - East Side	1 day	Mon 8/2/10	Mon 8/2/10	Mon 8/2/10	Mon 8/2/10	100%		8/2 → Concrete Replacement - East Side											
46	Concrete Replacement - West Side	1 day	Fri 7/30/10	Fri 7/30/10	Fri 7/30/10	Fri 7/30/10	100%		7/30 → Concrete Replacement - West Side											
47	Paver Removal	0.5 days	Thu 7/29/10	Thu 7/29/10	Thu 7/29/10	Thu 7/29/10	100%		7/29 → Paver Removal											
48	New Pavers (280 SF)	1 day	Mon 8/23/10	NA	NA	Tue 8/24/10	0%	Michael's	8/23 → New Pavers (280 SF)											
49	Landscaping	24 hrs	Wed 10/13/10	NA	NA	Fri 10/15/10	0%	Woodland	10/13 → Landscaping											
51	Elizabeth from High to North	59.75 days	Thu 7/15/10	Thu 7/15/10	NA	Tue 10/19/10	87%		7/15 → Elizabeth from High to North											
52	Tree/Shrub Removal (8 EA)	0.5 days	Thu 7/15/10	Thu 7/15/10	Thu 7/15/10	Thu 7/15/10	100%	Tawa Tree	7/15 → Tree/Shrub Removal (8 EA)											
53	Concrete Removal - East Side (4121 SF)	2 days	Thu 7/29/10	Thu 7/29/10	Mon 8/9/10	Mon 8/9/10	100%		7/29 → Concrete Removal - East Side (4121 SF)											
54	Concrete Replacement - East Side	3 days	Mon 8/2/10	Mon 8/2/10	Mon 8/9/10	Mon 8/9/10	100%		8/2 → Concrete Replacement - East Side											
55	Concrete Removal - West Side (790 SF)	1 day	Thu 7/29/10	Thu 7/29/10	Mon 8/9/10	Mon 8/9/10	100%		7/29 → Concrete Removal - West Side (790 SF)											

Date: Mon 8/23/10 3:16 PM
Task Progress
Summary
External Tasks
Deadline

Split
Milestone
Project Summary
External Milestone

ALL - LIMA - DOWNTOWN STREETSCAPE RENOVATION CONSTRUCTION SCHEDULE

ID	Task Name	Baseline Duration	Projected Start	Actual Start	Actual Finish	Projected Finish	% Complete	Resource Names	Apr	May	Jun	Jul	Aug	Sep	Oct	Nov	Dec	Jan	Feb	Mar	Apr	May	Jun	Jul	Aug	Sep
111	New Pavers (703 SF)	1 day	Wed 9/1/10	NA	NA	Wed 9/1/10	0%	Michael's						9/1												
112	Landscaping	16 hrs	Mon 11/1/10	NA	NA	Tue 11/2/10	0%	Woodland																		
113																										
114	Main from Town Square to Spring	66.65 days	Mon 8/23/10	Mon 8/23/10	NA	Thu 11/4/10	16%																			
115	Tree/Shrub Removal (16 EA)	1 day	Mon 8/23/10	Mon 8/23/10	Mon 8/23/10	Mon 8/23/10	100%	Tawa Tree																		
116	Concrete removal & replacement roadway - Square to Spring	5 days	Mon 9/13/10	NA	NA	Thu 9/16/10	0%																			
117	Concrete Removal - East Side (1935 SF)	1.5 days	Mon 8/23/10	Mon 8/23/10	NA	Wed 9/8/10	50%																			
118	Concrete Removal - West Side (540 SF)	0.5 days	Mon 8/23/10	Mon 8/23/10	NA	Wed 9/8/10	50%																			
119	Concrete Replacement - East Side	1.5 days	Wed 9/8/10	NA	NA	Mon 9/13/10	0%																			
120	Concrete Replacement - West Side	0.5 days	Mon 9/13/10	NA	NA	Mon 9/13/10	0%																			
121	Paver Removal	1 day	Wed 9/1/10	NA	NA	Wed 9/1/10	0%																			
122	New Pavers (399 SF)	1 day	Thu 9/2/10	NA	NA	Thu 9/2/10	0%	Michael's																		
123	Landscaping	16 hrs	Wed 11/3/10	NA	NA	Thu 11/4/10	0%	Woodland																		
124																										
125	Main from Spring to Elm	67.65 days	Mon 8/23/10	Mon 8/23/10	NA	Tue 11/9/10	28%																			
126	Tree/Shrub Removal (23 EA)	1 day	Mon 8/23/10	Mon 8/23/10	Mon 8/23/10	Mon 8/23/10	100%	Tawa Tree																		
127	Concrete Removal - East Side (96 SF)	0.5 days	Mon 8/23/10	Mon 8/23/10	NA	Thu 9/9/10	50%																			
128	Concrete Removal - West Side (112 SF)	0.5 days	Mon 8/23/10	Mon 8/23/10	NA	Thu 9/9/10	50%																			
129	Concrete Replacement - East Side	0.5 days	Thu 9/9/10	NA	NA	Thu 9/9/10	0%																			
130	Concrete Replacement - West Side	0.5 days	Mon 9/13/10	NA	NA	Mon 9/13/10	0%																			
131	Paver Removal (0 SF)	0 days	Thu 9/2/10	NA	NA	Thu 9/2/10	0%																			
132	New Pavers (0 SF)	0 days	Thu 9/2/10	NA	NA	Thu 9/2/10	0%	Michael's																		
133	Landscaping	24 hrs	Fri 11/5/10	NA	NA	Tue 11/9/10	0%	Woodland																		
134																										
135	Town Square	76.65 days	Tue 8/24/10	NA	NA	Thu 11/25/10	0%																			
136	Tree/Shrub Removal (51 EA)	2 days	Tue 8/24/10	NA	NA	Wed 8/25/10	0%	Tawa Tree																		
137	Paver Removal	8 days	Thu 9/2/10	NA	NA	Wed 9/15/10	0%																			
138	New Pavers (17973 SF)	30 days	Mon 9/6/10	NA	NA	Tue 10/26/10	0%	Michael's																		
139	Concrete Removal - North Side (14214 SF)	12 days	Thu 9/9/10	NA	NA	Thu 9/30/10	0%																			
140	Concrete Replacement - North side	12 days	Tue 9/14/10	NA	NA	Tue 10/5/10	0%																			
141	Concrete Removal - South Side (3652 SF)	3 days	Thu 9/30/10	NA	NA	Wed 10/6/10	0%																			
142	Concrete Replacement - South Side	4 days	Mon 10/4/10	NA	NA	Mon 10/11/10	0%																			
143	Landscaping	96 hrs	Wed 11/10/10	NA	NA	Thu 11/25/10	0%	Woodland																		



Date: Mon 8/23/10 3:16 PM

Task		Progress		Summary		External Tasks		Deadline	
Split		Milestone		Project Summary		External Milestone			